

ROCIO

SALEMA COURTYARD

FRAÇÃO AF


APARTAMENTO 1 DUPLEX

PISOS 3 E 4

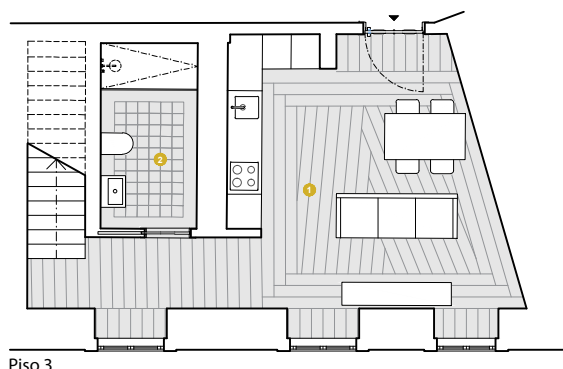
Rocio Salema Courtyard

- 1 | Sala/Kitchenette 2 6.94m² | Living room/Kitchen | Salon/Cuisine
- 2 | IS 5.40m² | Bathroom | Salle de bain
- 3 | Quarto 21.95m² | Bedroom | Chambre

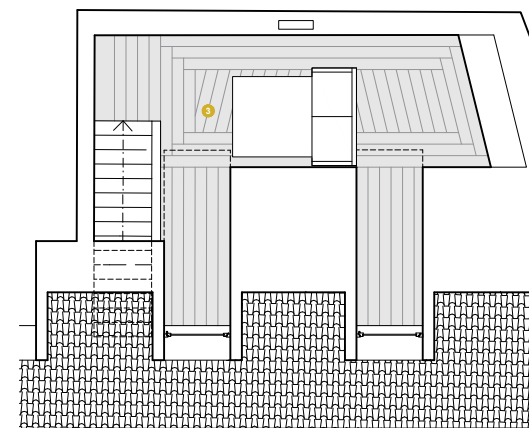
ABI | 88.32m² | GROSS INTERIOR AREA | SBI

0 0.5 1 2 

As areas aqui apresentadas são aproximadas, indicativas e sem carácter contratual.
Les surfaces sont approximatives et les plans indicatifs. Document non contractuel et
donne à titre informatif. Surfaces en conformité avec la législation portugaise.
The areas here contained are approximate, indicative and have no contractual nature.



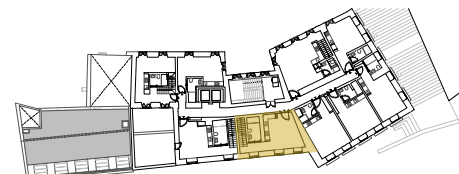
Piso 3



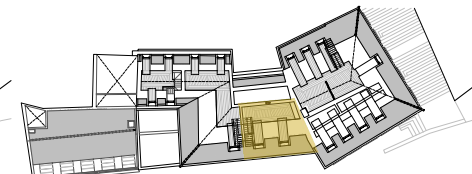
Piso 4 (sofão)



ALÇADO PÁTIO DO SALEMA | PÁTIO DO SALEMA FACADE



PISO 3 | FLOOR 3 | ÉTAGE 3



PISO 4 | FLOOR 4 | ÉTAGE 4