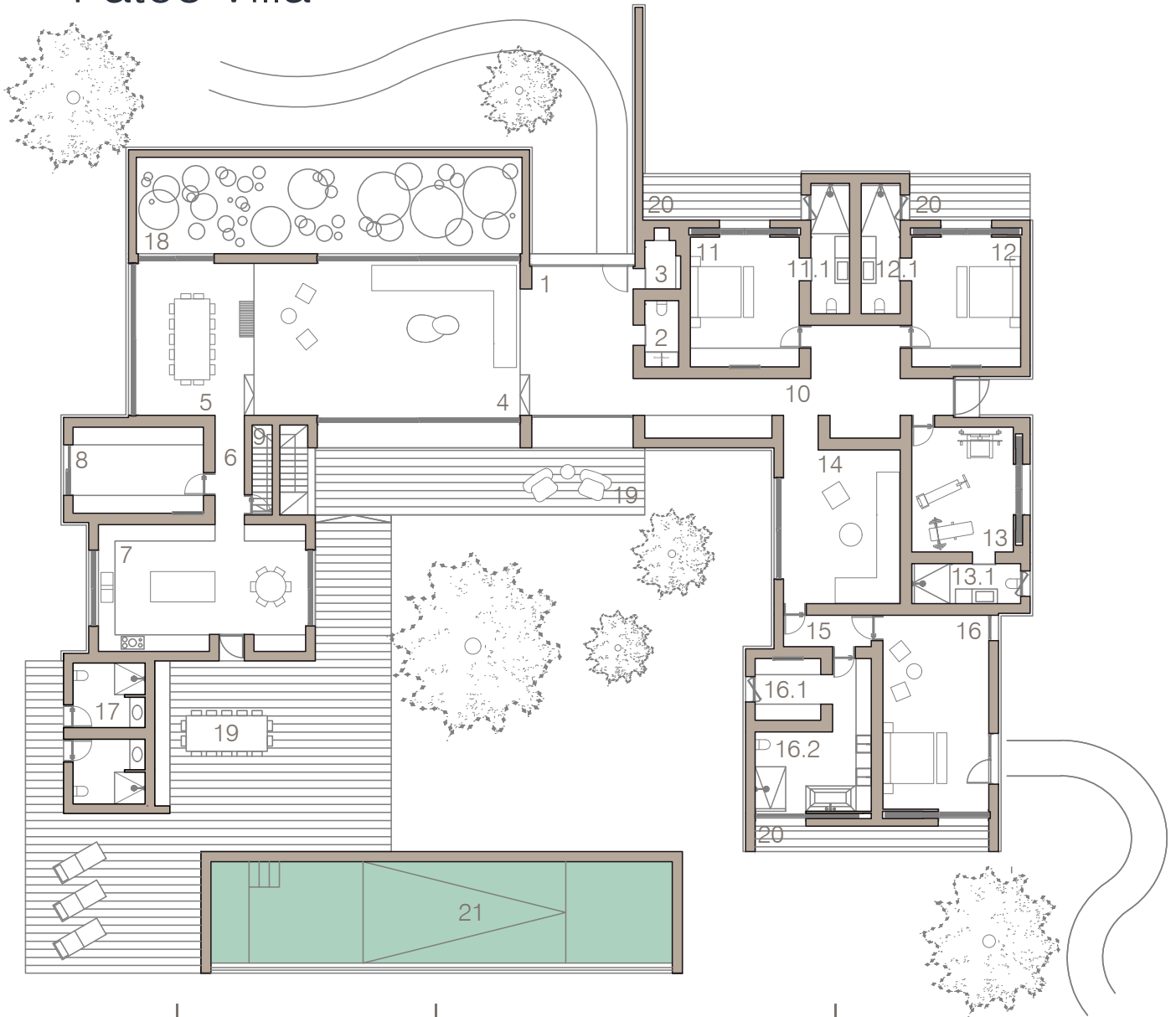




MELIDES VILLAS

Pateo Villa



3

BEDROOMS

5

BATHROOMS

551.80m²

BUILDING FOOTPRINT

366.50m²

EXTERIOR

		m ²			m ²			m ²
01	Hall	25.80	10	Corridor II	32.70	16	Master Bedroom	32.70
02	WC Social	3.90	11	Bedroom I	22.70	16.1	Closet Master Bedroom	6.90
03	Technical Room	2.70	11.1	WC Bedroom I	8.30	16.2	WC Master Bedroom	19.40
04	Living Room I	64.30	12	Bedroom II	22.70	17	Pool House	15.00
05	Dining Room	28.20	12.1	WC Bedroom II	8.30	18	Pateo	57.90
06	Corridor I	5.00	13	Gym	20.40	19	Deck Pool and Pergola	168.20
07	Kitchen	40.00	13.1	WC Bedroom III	7.20	20	Deck Bedrooms	29.40
08	Laundry	18.10	14	Living Room II	30.1	21	Pool	96.00
09	Pantry	6.80	15	Corridor III	4.70			