

# 3.1.0

# FRAÇÃO E

## APARTAMENTO T3+1

3+1-BEDROOM APARTMENT



### 3º e 4º Piso

3rd and 4th Floor

ABP\_GPA

177,38 m<sup>2</sup>\_sqm

### 2 Lugar de Estacionamento

2 Parking Spot

### ÁREAS\_ AREAS

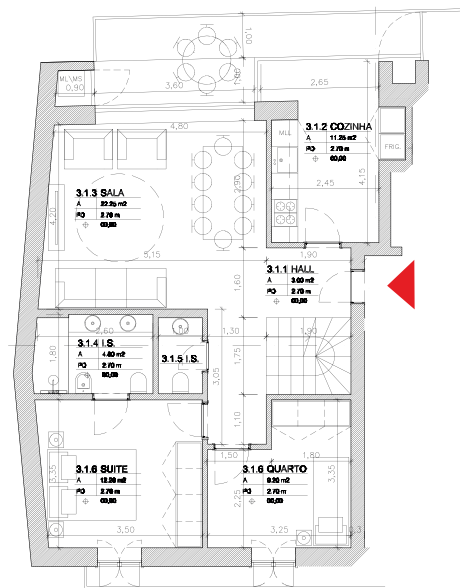
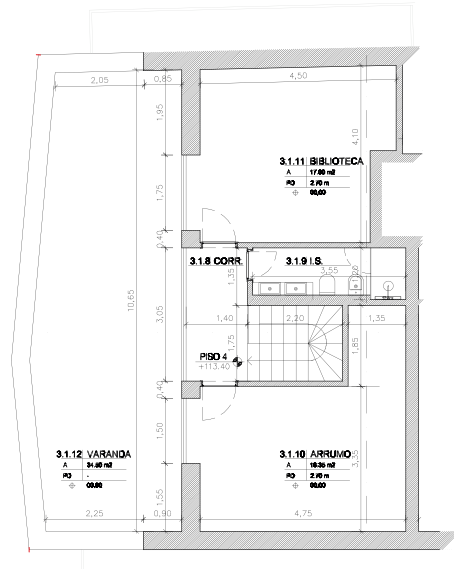
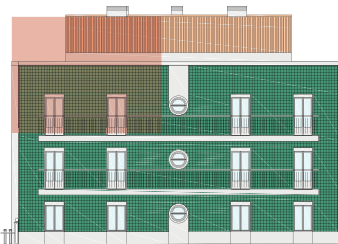
Área Bruta de Construção\_ Gross Construction Area 177,38 m<sup>2</sup>\_sqm  
Área Bruta Comum\_ Gross Common Area 23,95 m<sup>2</sup>\_sqm

- |  |                           |
|--|---------------------------|
| 1. Quarto (suite)_ Bedroom (suite)         | 14,10 m <sup>2</sup> _sqm |
| 2. Sala de jantar_ Dining Room             | 10,80 m <sup>2</sup> _sqm |
| 3. Sala                                    | 22,25 m <sup>2</sup> _sqm |
| 4. Cozinha_ Living room/Kitchen            | 11,25 m <sup>2</sup> _sqm |
| 5. Casa de Banho (suite)_ Bathroom (suite) | 4,60 m <sup>2</sup> _sqm  |
| 6. Casa de Banho_ Bathroom                 | 4,26 m <sup>2</sup> _sqm  |
| 7. Quarto A (Duplex)_ Bedroom A (Duplex)   | 17,00 m <sup>2</sup> _sqm |
| 8. Quarto B (Duplex)_ Bedroom B (Duplex)   | 18,35 m <sup>2</sup> _sqm |
| 9. Terraço_ Terrace                        | 57,90 m <sup>2</sup> _sqm |
| 10. Arrecadação_ Store Room                | 4,85 m <sup>2</sup> _sqm  |
| 11. Lugar de Estacionamento_ Parking space | Nº 6 e 8                  |

### Fachada Frontal\_ Front Facade

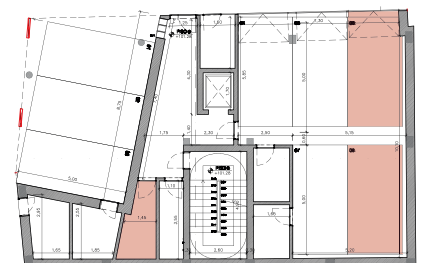
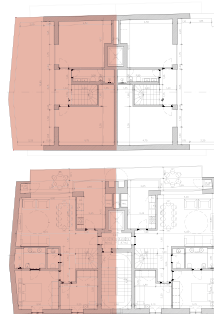


### Fachada Tardoz\_ Back Facade



Planta 3º e 4º Piso\_ 3rd and 4th FloorPlan  
Apartamento\_ Apartment

Planta R/C\_ Ground FloorPlan  
Arrecadação e Estacionamento  
Storage and Parking



AVISO LEGAL: As informações e imagens contidas nesta planta são meramente indicativas e podem estar sujeitas a alterações ou variações devido a requisitos técnicos, construtivos ou legais.

LEGAL NOTICE: The information and images contained in this plan are merely indicative and may be subject to changes or variations due to technical, constructive or legal requirements.